



**mfm**<sup>®</sup> BUILDING PRODUCTS CORP.

## Underlayment Selection Guide

## MFM Underlayments cover most roofing applications:



Asphalt Shingles



Metal Roofing



Cedar/Synthetic Shakes



Clay/Concrete Tiles



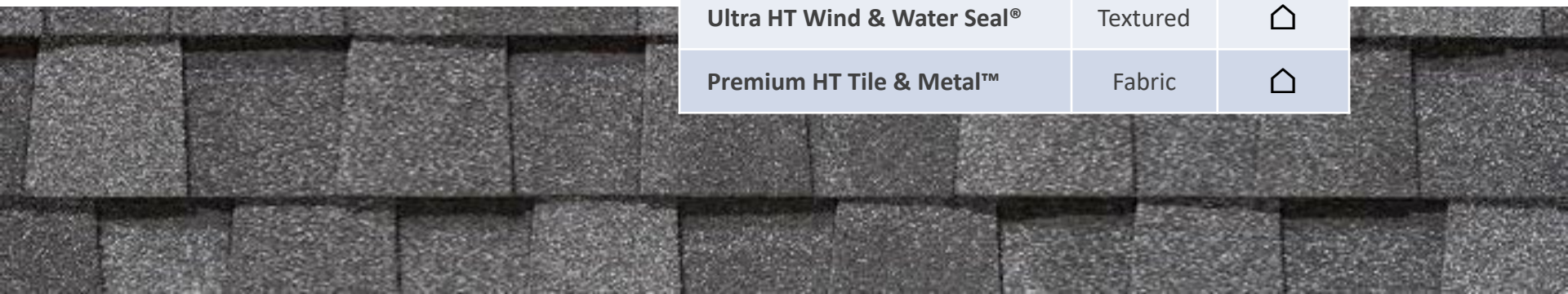


## MFM Underlayments for Asphalt Shingle Roofs



Asphalt Shingles

Product	Surface	Shake
IB-3™ IceBuster	Granular	☐
IB-3™ StormStopper	Granular	☐
IB-3™ StormStopper Plus	Granular	☐
IB-4™ StormStopper	Granular	☐
StormStopper™ FSU	Textured	☐
ShingleStarter®	Granular	☐
MFM Wind & Water Seal™	Textured	☐
Ultra HT Wind & Water Seal®	Textured	☐
Premium HT Tile & Metal™	Fabric	☐



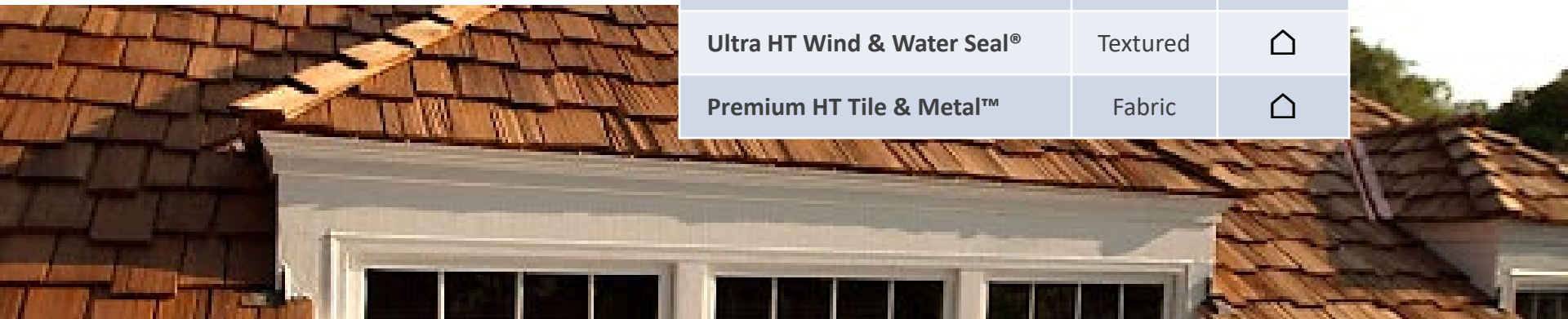


## MFM Underlayments for Cedar/Synthetic Shake Roofs



Cedar Shakes

Product	Surface	Shake
IB-3™ IceBuster	Granular	🏠
IB-3™ StormStopper	Granular	🏠
IB-3™ StormStopper Plus	Granular	🏠
IB-4™ StormStopper	Granular	🏠
StormStopper™ FSU	Textured	🏠
ShingleStarter®	Granular	🏠
MFM Wind & Water Seal™	Textured	🏠
Ultra HT Wind & Water Seal®	Textured	🏠
Premium HT Tile & Metal™	Fabric	🏠





## MFM Underlayments for Metal Roofing Systems



Metal Roofing Systems

Product	Surface	Metal
StormStopper™ FSU	Textured	🏠
MFM Wind & Water Seal™	Textured	🏠
Ultra HT Wind & Water Seal®	Textured	🏠
Premium HT Tile & Metal™	Fabric	🏠

🏠 Indicates High Temperature underlayment for applications up to 250°F





## MFM Underlayments for Tile Roofing Systems



Clay/Concrete Tiles

Product	Surface	Tile
MFM Wind & Water Seal™	Textured	🏠
Ultra HT Wind & Water Seal®	Textured	🏠
Premium HT Tile & Metal™	Fabric	🏠

🏠 Indicates High Temperature underlayment for applications up to 250°F





## MFM Underlayment Products

SELF-ADHERING  
**IB3**<sup>™</sup>  
**ICE BUSTER**

SEALING EDGE  
**IB3**<sup>™</sup>  
**STORM STOPPER**

SEALING EDGE  
**IB4**<sup>™</sup>  
**STORM STOPPER**

**IB3+**<sup>™</sup>  
**STORM STOPPER PLUS**  
SEALING EDGE PROTECTION

SELF-ADHERING  
**SHINGLE STARTER**<sup>®</sup>

**STORM STOPPER FSU**<sup>™</sup>  
FILM SURFACE UNDERLAYMENT

 **ULTRA HT**  
WIND & WATER SEAL<sup>®</sup>  
HIGH TEMPERATURE

**WIND & WATER SEAL**<sup>™</sup>  
HIGH TEMPERATURE

 **PREMIUM HT**  
TILE & METAL<sup>™</sup>



## MFM Underlayment Products



All MFM 36" roofing underlayments are backed with a split release liner, which removes easily during installation.



MFM underlayment products are both self-adhering and self-sealing around roofing fasteners for a complete waterproof barrier.





## MFM Underlayment Products



MFM underlayments are suitable for commercial and residential re-roofing projects...as well as new construction installations.

## General Use Underlayments



Width	Length	Color	Thickness	Min. Temp	Warranty
36" (91 cm)	33', 65' (10 m, 19.8 m)	Black	50 Mils Nominal (0.13 cm)	>40° F (4.4° C)	5-Year
36" (91 cm)	65' (19.8 m)	Black	50 Mils Nominal (0.13 cm)	>40° F (4.4° C)	5-Year
36" (91 cm)	65' (19.8 m)	Black	50 Mils Nominal (0.13 cm)	>40° F (4.4° C)	5-Year
36" (91 cm)	67' (20.4 m)	Black	60 Mils Nominal (0.15 cm)	>40° F (4.4° C)	10-Year

*IB-4 is a special-order product.*

## General Use Underlayments *continued*

Width	Length	Color	Thickness	Min. Temp	Warranty
36" (91 cm)	67' (20.4 m)	Black	45 Mils Nominal (0.11 cm)	>40° F (4.4° C)	5-Year



## ShingleStarter

Width	Length	Color	Thickness	Min. Temp	Warranty
7.2" (18.3 cm)	33.5' (10.2 m)	Black	50 Mils Nominal (0.13 cm)	>40° F (4.4° C)	5-Year





## High Temperature Underlayments



Width	Length	Color	Thickness	Temp. Range	Warranty
36" (91 cm)	67' (20.4 m)	White/Gray	40 Mils Nominal (0.10 cm)	>50° F <250° F (>10°/<121°C)	10-Year
36" (91 cm)	67' (20.4 m)	White	45 Mils Nominal (0.11 cm)	>50° F <250° F (>10°/<121°C)	10-Year
36" (91 cm)	67' (20.4 m)	White/Gray	60 Mils Nominal (0.15 cm)	>50° F <250° F (>10°/<121°C)	10-Year



**mfm**® BUILDING PRODUCTS CORP.

## Product Overviews



SELF-ADHERING  
**IB3**<sup>TM</sup>  
**ICE BUSTER**

MIAMI-DADE COUNTY  
APPROVED

- **Self-adhering, mineral surface underlayment that installs under roofing at edges, valleys, vents, skylights and chimneys**
- Applies directly to roof deck
- Protects from leaks caused by ice dams, melting snow and wind-driven rain
- Split release liner for ease of installation
- May be left exposed for up to 30 days
- **50 mil thickness**

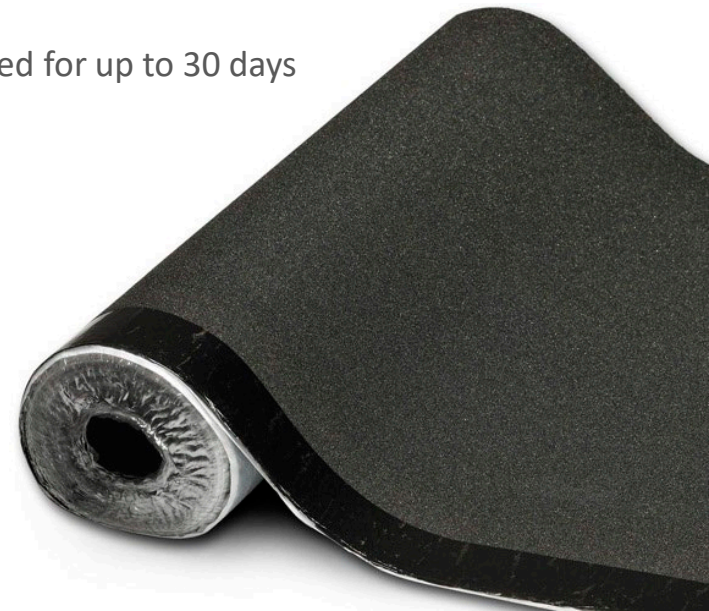




SEALING EDGE  
**IB3**<sup>TM</sup>  
**STORM STOPPER**

MIAMI-DADE COUNTY  
APPROVED

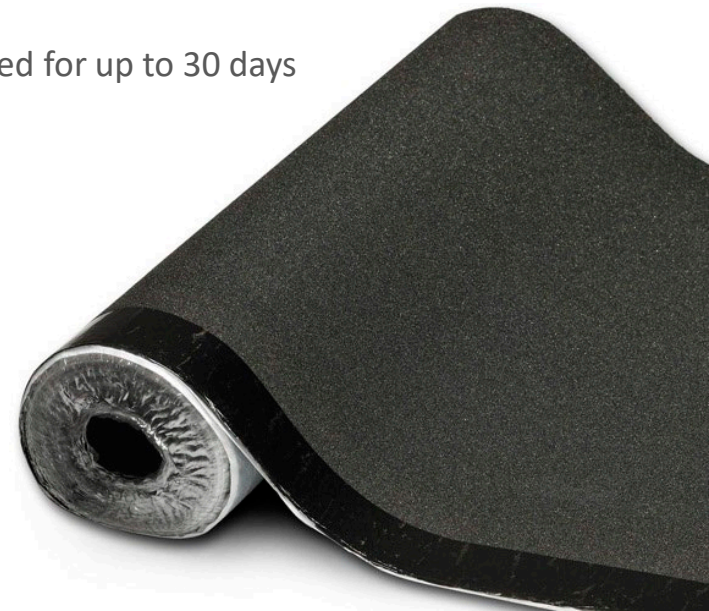
- A non-removable **selvedge edge** allows for a secure seal on overlaps
- Self-adhering, mineral surface underlayment
- Minimum slope for installation is 2" per foot
- Installs under roofing at edges, valleys, vents, skylights and chimneys
- Protects from leaks caused by ice dams, melting snow and blowing rain
- Split release liner
- May be left exposed for up to 30 days
- **50 mil thickness**





**IB3+**<sup>™</sup>  
**STORM STOPPER PLUS**  
SEALING EDGE PROTECTION

- A non-removable **selvedge edge** allows for a secure seal on overlaps
- Self-adhering, mineral surface underlayment
- Minimum slope for installation is 2" per foot
- Installs under roofing at edges, valleys, vents, skylights and chimneys
- **Enhanced adhesive system aggressively bonds to the substrate**
- Split release liner
- May be left exposed for up to 30 days
- **50 mil thickness**







SEALING EDGE  
**IB4**™  
**STORM STOPPER**

- A removable **selvedge edge** allows for a secure seal on overlaps
- Self-adhering, mineral surface underlayment
- Minimum slope for installation is 2" per foot
- Installs under roofing at edges, valleys, vents, skylights and chimneys
- Protects from leaks caused by ice dams, melting snow and blowing rain
- Split release liner for ease of installation
- May be left exposed for up to 365 days
- **60 mil thickness**



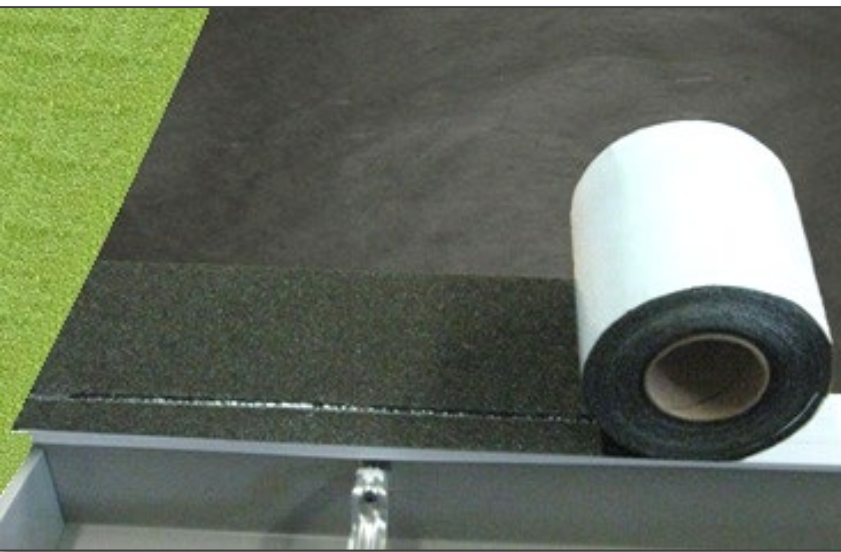


# STORM STOPPER FSU™

FILM SURFACE UNDERLAYMENT

- Composed of a reinforced **polymer film** with an embedded traction surface
- Self-adhering and self-sealing around fasteners
- Minimum slope for installation is 2" per foot
- Installs under roofing at edges, valleys, vents, skylights and chimneys
- Protects from leaks caused by ice dams, melting snow and blowing rain
- Split release liner for ease of installation
- May be left exposed for up to 30 days
- **45 mil thickness**





SELF-ADHERING  
**SHINGLE  
STARTER**<sup>®</sup>

MIAMI-DADE COUNTY  
APPROVED

- **7.2" wide starter shingle course**
- Self-sealing tab on edge
- Self-adhering, mineral surface membrane
- Applies directly to roof deck
- Installs under roofing at edges
- Protects from leaks caused by ice dams, melting snow and blowing rain
- Packaged in individually wrapped rolls
- May be left exposed for up to 30 days
- **50 mil thickness**





- Composed of a non-slip, polymer film
- Engineered for use under all roofing materials
- Ideal for secondary water resistance
- Self-sealing around fasteners
- Applies directly to roof deck
- Minimum slope for installation is 2" per foot
- Protects from leaks caused by ice dams and wind-driven rain
- **High temperature rated**
- May be left exposed for up to 60 days
- **40 mil thickness**
- Split release liner

**WIND & WATER SEAL™**  
HIGH TEMPERATURE





- ❑ **High temperature rated** for extreme protection
- ❑ Cool, white, non-slip cross-laminated polymer film top surface
- ❑ Engineered for use under asphalt shingles and metal roofing systems
- ❑ Provides secondary water resistance
- ❑ Self-sealing around fasteners
- ❑ Protects from ice dams and wind-driven rain
- ❑ Split release liner
- ❑ May be left exposed for up to 90 days
- ❑ **45 mil thickness**

 **ULTRA HT**  
WIND & WATER SEAL®  
HIGH TEMPERATURE

MIAMI-DADE COUNTY  
APPROVED





- ❑ **High temperature rated** for extreme protection
- ❑ High-grade, reinforced polyester fabric surface with fiberglass-reinforced core
- ❑ Engineered as a whole roof covering under metal roofing, tile and cedar shake roofing systems
- ❑ Features a 3" selvedge edge
- ❑ Self-sealing around fasteners
- ❑ Protects from water and wind-driven rain
- ❑ Split release liner
- ❑ May be left exposed for up to 180 days
- ❑ **60 mil thickness**

 **PREMIUM HT**  
**TILE & METAL™**

MIAMI-DADE COUNTY  
APPROVED





## MFM Co-Branding Program

MFM offers a unique Co-Branding Program where we imprint your custom design on the following underlayment products:

- MFM Wind & Water Seal
- Premium HT Tile & Metal
- Ultra HT Wind & Water Seal

Ask your local MFM Sales Representative, contact Customer Service at 800-882-7663 or [customerservice@mfm-bp.com](mailto:customerservice@mfm-bp.com), for more information.

**MFM Wind & Water Seal™ Co-Branding Program**

Partner with MFM to Explore a Marketing Opportunity on our High Temperature Underlayment – MFM Wind & Water Seal™

**Co-Branding Program Details:**

- Provide a 10% discount on all MFM Wind & Water Seal products to your customers.
- Receive a 10% discount on all MFM Wind & Water Seal products to your customers.
- Receive a 10% discount on all MFM Wind & Water Seal products to your customers.
- Receive a 10% discount on all MFM Wind & Water Seal products to your customers.
- Receive a 10% discount on all MFM Wind & Water Seal products to your customers.
- Receive a 10% discount on all MFM Wind & Water Seal products to your customers.
- Receive a 10% discount on all MFM Wind & Water Seal products to your customers.
- Receive a 10% discount on all MFM Wind & Water Seal products to your customers.
- Receive a 10% discount on all MFM Wind & Water Seal products to your customers.
- Receive a 10% discount on all MFM Wind & Water Seal products to your customers.

**Available Ink Colors:**

Blue Green Red Black

**Premium HT Tile & Metal Co-Branding Program**

Partner with MFM to Explore a Marketing Opportunity on our Tile and Metal Underlayment – Premium HT Tile & Metal™

**Co-Branding Program Details:**

- Provide a 10% discount on all Premium HT Tile & Metal products to your customers.
- Receive a 10% discount on all Premium HT Tile & Metal products to your customers.
- Receive a 10% discount on all Premium HT Tile & Metal products to your customers.
- Receive a 10% discount on all Premium HT Tile & Metal products to your customers.
- Receive a 10% discount on all Premium HT Tile & Metal products to your customers.
- Receive a 10% discount on all Premium HT Tile & Metal products to your customers.
- Receive a 10% discount on all Premium HT Tile & Metal products to your customers.
- Receive a 10% discount on all Premium HT Tile & Metal products to your customers.
- Receive a 10% discount on all Premium HT Tile & Metal products to your customers.
- Receive a 10% discount on all Premium HT Tile & Metal products to your customers.

**Available Ink Colors:**

Blue Green Red Black

**Ultra HT Wind & Water Seal® Co-Branding Program**

Partner with MFM to Explore a Marketing Opportunity on our Premium Underlayment – Ultra HT Wind & Water Seal®

**Co-Branding Program Details:**

- Provide a 10% discount on all Ultra HT Wind & Water Seal products to your customers.
- Receive a 10% discount on all Ultra HT Wind & Water Seal products to your customers.
- Receive a 10% discount on all Ultra HT Wind & Water Seal products to your customers.
- Receive a 10% discount on all Ultra HT Wind & Water Seal products to your customers.
- Receive a 10% discount on all Ultra HT Wind & Water Seal products to your customers.
- Receive a 10% discount on all Ultra HT Wind & Water Seal products to your customers.
- Receive a 10% discount on all Ultra HT Wind & Water Seal products to your customers.
- Receive a 10% discount on all Ultra HT Wind & Water Seal products to your customers.
- Receive a 10% discount on all Ultra HT Wind & Water Seal products to your customers.
- Receive a 10% discount on all Ultra HT Wind & Water Seal products to your customers.

**Available Ink Colors:**

Blue Green Red Black

## Underlayment Approvals

Product	Approvals	
<b>IB-3™ IceBuster</b>	<b>ASTM D 1970            Florida Building Code FL 11842            Miami-Dade County Approved            ICC-ES ESR-1737</b>	<b>Los Angeles County (LARC/LABC)            State of California (CRC/CBC)            Texas Department of Insurance Listed</b>
<b>IB-3™ StormStopper</b>	<b>ASTM D 1970            Florida Building Code FL 11842            Miami-Dade County Approved            ICC-ES ESR-1737</b>	<b>Los Angeles County (LARC/LABC)            State of California (CRC/CBC)            Texas Department of Insurance Listed</b>
<b>IB-3™ StormStopper Plus</b>	<b>ASTM D 1970            Florida Building Code FL 41919.1</b>	
<b>IB-4™ StormStopper</b>	<b>ASTM D 1970            Florida Building Code FL 11842            ICC-ES ESR-1737</b>	<b>Los Angeles County (LARC/LABC)            State of California (CRC/CBC)            Texas Department of Insurance Listed</b>



## Underlayment Approvals

Product	Approvals	
ShingleStarter®	Florida Building Code FL 11842 Miami-Dade County Approved ICC-ES ESR-1737	Los Angeles County (LARC/LABC) State of California (CRC/CBC)
StormStopper FSU™	ASTM D 1970 Florida Building Code FL 11842 Texas Department of Insurance Listed	
Ultra HT Wind & Water Seal®	ASTM D 1970 Florida Building Code FL 11842 Miami-Dade County Approved ICC-ES ESR-1737	Los Angeles County (LARC/LABC) State of California (CRC/CBC) Texas Department of Insurance Listed CCMC 14048-L
Premium HT Tile & Metal™	ASTM D 1970 Florida Building Code FL 11842 Miami-Dade County Approved TAS-103-95	

## MFM Website ([www.mfmbp.com](http://www.mfmbp.com))

The MFM website offers a wealth of product information and technical data including:

- Sales Brochures
- Technical Data Sheets
- Installation Instructions
- Warranties
- Building Code Approvals
- Videos
- Technical Bulletins
- Blog Articles





MFM underlayments come packaged in durable cartons to protect the membrane until use.

## Underlayment Packaging



ShingleStarter® is the only product available in shrink-sleeve for individual sale. Label is printed in English and Latin American Spanish.

All underlayments come palletized, stretch-wrapped and metal banded with a protective cardboard top layer. 30 cartons per pallet, except ShingleStarter®, which ships 27 cartons per pallet.





**mfm**<sup>®</sup> BUILDING PRODUCTS CORP.

525 Orange Street  
Coshocton, Ohio 43812

800-882-7663

[www.mfmbp.com](http://www.mfmbp.com) ▪ [info@mfmbp.com](mailto:info@mfmbp.com)



*An Employee-Owned Company*